

# Re-thinking leadership capacity of international students

**Marina Uehara, LGSW MA**

Program Coordinator for Student Engagement - International Student and Scholar Services

**Enoch (Yifei) Sun**

Student Engagement Intern - International Student and Scholar Services

University of Minnesota - Twin Cities, College of Liberal Arts

Bachelor of Arts | Sociology of Law, Criminology, and Deviance

**Student Voices: Peter (Se Jin) Park (CLA), Alyssa Chang (CEHD), Peiying Shi(CEHD)**

**ISSS**

International  
Student & Scholar  
Services



UNIVERSITY OF MINNESOTA

# Agenda

- Who is here today and why it should be important to us
- Leadership Framework
- International Student Voices

# Question to Audience

1- What do you see your role being as a higher education professional in developing international student leadership capacity?

2- What are you missing in order to effectively work with your international students?

3- Describe in one word a positive experience you have had with a student.

3



**Framework**  
**(a needs  
based,  
strength  
focused, and  
goal oriented  
model)**

# How do we do this work?

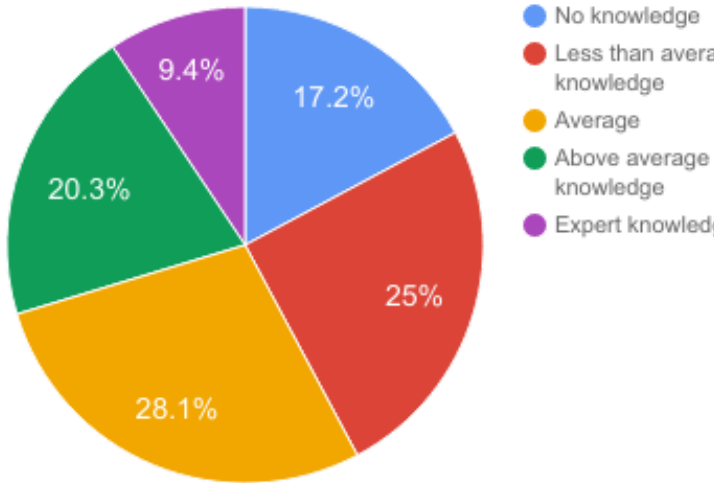
- A needs based, strengths focused and goal oriented framework (departmental perspective):
  - Cultivating partnerships and collaborations
  - Identifying engagement gaps
  - Providing students as strengths based professionals
  - Re-thinking and re-shaping existing department models to serve the international students

# How do we do this work?

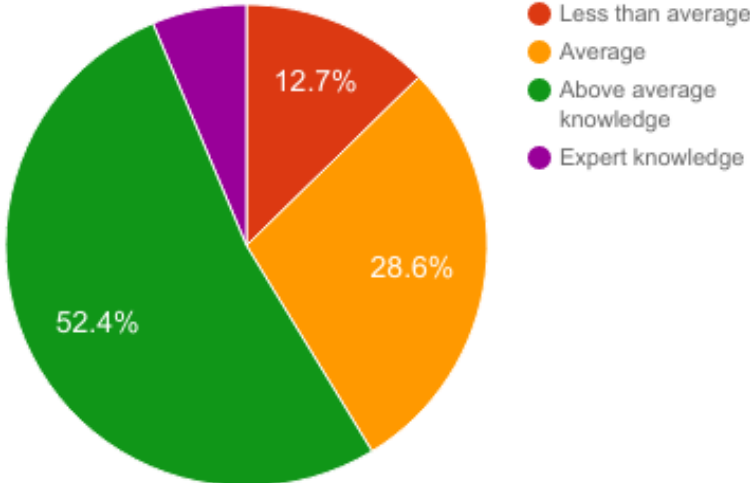
- A needs based, strengths focused and goal oriented framework (student perspective):
  - Competencies that complement graduation and career aspirations
  - Critical feedback strongly shaped by student voice
  - Positive departmental outcomes become the assets of the student

# Data

How much knowledge did you have of the subject matter prior to the Culture Corps Presentation/Project?



How much knowledge do you have now on the subject matter after the Culture Corps Presentation/Project?



# Student Voices



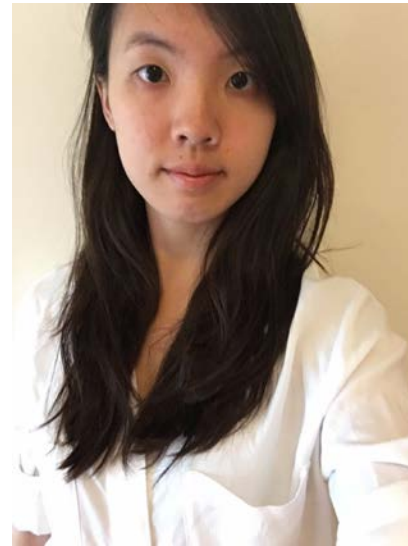
Peter (Se Jin) Park

Career Services Marketing Intern  
*HRL Winter Break Leader '14-'15*  
*iSuccess Program Assistant '15*  
*Global Gopher Event Leader '15-'16*  
*FYE Section Leader '16-'17*



Alyssa Chang

Student Engagement Program  
Assistant  
Culture Corps Ambassadors  
*Step up intern '16*  
*iSuccess Program Assistant '16*



Peiyong Shi

International Outreach Intern in  
Gender and Sexuality Center  
Leadership and Service Award '16



Enoch Sun

Direct Services Advocate in The  
Aurora Center  
Middlebrook CA  
FYE Team Leader  
*Orientation Leader '16*  
*At-Large Representative '15-'16*



# Student Leaders Panel

1- What made you interested in becoming a leader at the UofM?

2- How has one-on-one mentoring helped you form your professional identity?

3- Talk about one story in which you realized you had the capacity to change/affect the campus climate, the environment around you, a department.

4- Audience questions

9

# Questions?

Marina Uehara  
uehar003@umn.edu

## Thank you for coming!

10